

SEACRAFT SHIPYARD

**Do It Yourself
Option**

P.O. Box 1550, 3820 Lake Palourde Road,
Amelia, Louisiana 70340

985-631-2628 (phone) • 985-631-3513 (fax)

seacraft@seacraftshipyard.com • www.seacraftshipyard.com

**Subchapter M
Ready**

Providing Fast Turnarounds and Quality Workmanship at Competitive Prices Since 1955

REPAIRS • CONVERSIONS • FABRICATION • MACHINE SHOP • REGULATORY INSPECTIONS • BUYER INSPECTIONS
VESSEL & EQUIPMENT SALES, BROKERAGE, STORAGE, FLEETING & CUSTODIAL SERVICES

STORAGE/FLEETING CUSTODIAL SERVICES

Short or long term storage available in fresh water and storm safe port.
Facilities are manned, gated, lighted and have surveillance cameras.



Daily Bilge, Rope & Security Checks, Kept on Shore Power with HVAC Running, Machinery & Systems Ran Regularly, Interior & Exterior Cleaned Regularly, Rust Removed & Steel Painted As Needed, Renew & Maintain Regulatory Certifications, Market & Show Vessels To Prospective Buyers, Liability, Pollution & Hull Insurance, Vessel Pickup & Delivery

VESSELS AND ENGINES FOR SALE

160' CREWBOAT



**Built in 2003 • Cummins Powered
Current COI and Ready To Go To Work**

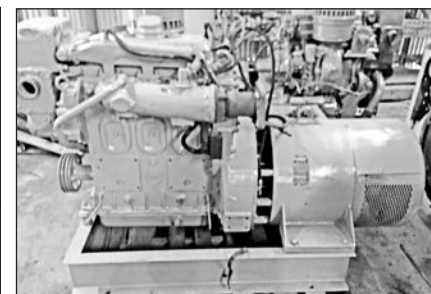
160' CREWBOAT



**Built in 2005 • Caterpillar Powered
ABS Class**



**(4) Caterpillar 3412
60m Running Take-Out
Engines**



**(2) GM 3-71 / 40kW
Running Take-Out
Generator Sets**

**For Vessel And Engine
Sale Information,
Please Call (985) 631-2628**