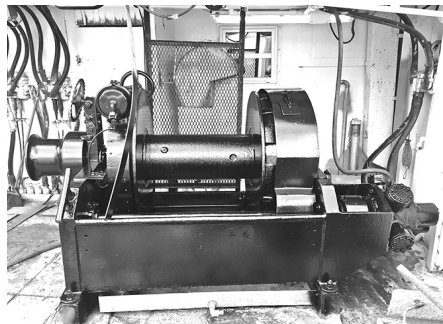
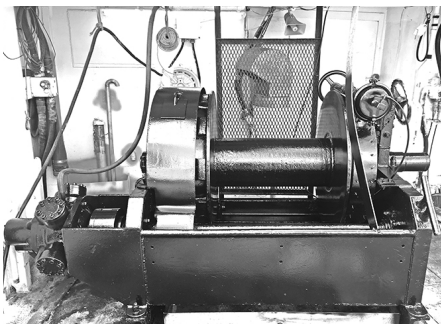


Right AND Left-Handed SPLIT Douglas East Coast Specials



With air brakes and Hrydrostar 5 hydraulic motors.
Drum capacity 285 fathoms of 1" wire (per winch).

Perfect Condition • BEST OFFER!

Generators For Sale



Turbo Charged 471 GM 125kW
1800 RPM with Hydraulic Shutdown
1500 Hours



Naturally Aspirated 471 GM 60kW
1800 RPM Gen Set
1850 Hours • Hydraulic Shutdown

Please Contact: John Fernandez (321) 223-7200